

POLE HEIGHT (FT)	MMC #	QTY	POLE TUBE				BASE DETAIL				CONNECTING BOLT DIA (IN)
			THICK (IN) "A"	BASE O.D. (IN) "B"	TOP O.D. (IN) "C"	LENGTH (FT) "D"	SQUARE "S" (IN)	BOLT CIRCLE "F" (IN)	THICKNESS "G" (IN)	HOLE/SLOT "H" (IN)	
15	WA-LC3-CAM15		3/16	11	8.9	15	25	25 1/2	1 1/4	1 3/8	1 1/4
20	WA-LC3-CAM20		3/16	11.8	9	20					
30	WA-LC3-CAM30		3/16	13.2	9	30					
40	WA-LC3-CAM40		1/4	14.6	9	40					
50	WA-LC3-CAM50		5/16	17.75	10.75	50					

LOAD CASE #1 LOADING:
 (1) CAMERA - 4.0 SQ FT @ 2'-0" ABOVE POLE TOP
 (1) DISH - 12" DIA @ POLE TOP
 (1) NEMA CABINET - 1.33 SQ FT @ 3'-8" FROM POLE TOP

MAXIMUM DEFLECTION SHALL NOT EXCEED
 0.7" IN 30 MPH WIND,
 OR 1.4" IN 70 MPH WIND

MATERIAL SPECIFICATIONS
POST: ASTM A572 GR55 BASE PLATE: ASTM A36 MAST ARM: ASTM A572 GR55 MOUNTING PLATE: ASTM A36 HARDWARE FINISH: ASTM F2329 CONNECTION BOLTS: ASTM A449 OR F1554 GR105 CONNECTION NUTS: CONNECTION WASHERS: ANCHOR BOLTS: ANCHOR BOLT NUTS: ASTM A563 GR DH ANCHOR BOLT WASHER: ASTM F436 WELDING ELBOW: ASTM A234 GR WPB, FY = 35KSI PIPE: ASTM A53 GR B OR ASTM A500 GR B

MUST SPECIFY 2ND HAND HOLE AND COUPLINGS AT TIME OF ORDER
 MUST SPECIFY LOWER HANDHOLE MOUNTING HEIGHT AT TIME OF ORDER
 MUST SPECIFY SLOPE OF ELBOW AT TIME OF ORDER
 FIELD MEASURE BARRIER BACK SLOPE PRIOR TO MANUFACTURING ELBOW

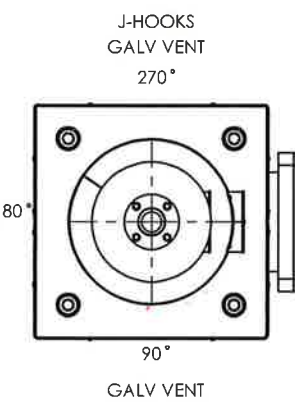
MMC #	LOWER HH HGT	BARRIER BACK SLOPE ANGLE	2ND CPLG & HH REQUIRED

APPROVED
 Manufacturer's Pole Plan
 Approved For Listing As A
 Pre-Approved Drawing
 WSDOT Bridge & Structures Office
 By GB Date 9-14-2020

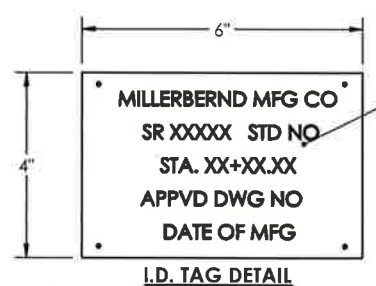


8-18-20 (EXPIRES 12-18-21)

DESIGN CRITERIA
2015 AASHTO STANDARD SPECIFICATIONS FOR STRUCTURAL SUPPORTS ON HIGHWAY SIGNS, LUMINAIRES & TRAFFIC SIGNALS INCLUDING LATEST INTERIMS.
WINDS: 115 MPH WITH A MEAN RECURRENCE INTERVAL OF 1700 YEARS VORTEX SHED: N/A FATIGUE CAT: N/A NATURAL WIND GUST: N/A LUMINAIRE: N/A LUMINAIRE WEIGHT: N/A SIGN: N/A SIGN WEIGHT: N/A
GALLOPING: N/A TRUCK GUST: N/A

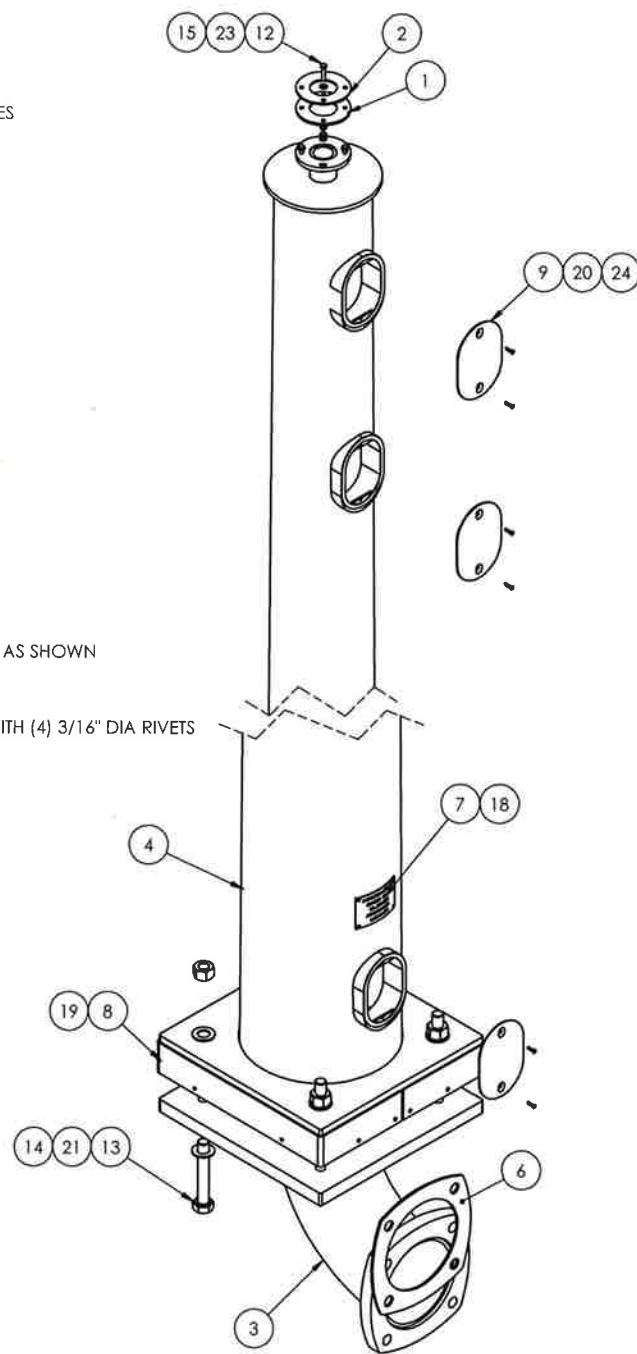


TOP VIEW ORIENTATION



ALUMINUM ID TAG
 TEXT TO BE STAMPED AS SHOWN
 5/16" HIGH LETTERS
 SECURED TO POST WITH (4) 3/16" DIA RIVETS

LOWER HANDHOLE MOUNTING HEIGHT MUST BE SPECIFIED BASED ON BRIDGE BARRIER ELEVATION AND ANY OTHER VERTICAL RAILINGS



NOTE: FOR NOTE AT WELD SYMBOL TAIL, SEE WELDING PROCEDURE SPECIFICATION

ITEM NO.	DESCRIPTION	QTY PER	ASSY	FINISH
1	NEOPRENE GASKET CAMERA PLATE ASSY	1		
2	CAMERA PLATE ASSY TOP	1		X
3	WLDMNT BRIDGE ELBOW	1		X
4	WLDMT POLE CAMERA "A" X "B" X "C" X "D"	1		
5	GROUND MTG PLATE	1	X	X
6	PAD FABREEKA 1/4	1		
7	I.D. TAG - WA	1	X	
8	SKIRT HALF 3/16 x 4"	2		X
9	COVER HH M34M 5x8 2 BOLT	3		X
10	BOLT HX HD 1-2-13NC X 1" F593C SS	1		
11	BOLT HX HD 1-4-20NC X 1/2 F593C SS	2	X	
12	BOLT HX HD 3-8-16NC X 1-3-4 F593C SS	4		
13	BOLT HVY HX HD 1 1/4-7NC X 8 A449	4		
14	NUT HVY HX 1-1-4-7NC A563 GV(DH)	8		
15	NUT HX NYLON INSERT LOCK 3-8-16 SS	4		
16	NUT SQ 1-2-13 SS	1		
17	PLUG-THD-PL-2 PVC	2	X	
18	RIVET POP 3/16X1 1/2X3/8 HD SS	4	X	
19	SCRWF10-20X1-2SS	12		
20	SCRW HX SK BT HD 1-4-20NC X 1 SS	6		
21	WASHER FLAT 1-1/4 GV	12		
22	WASH F.56 IDX1.375ODX.091 THK BRASS COMM. BRASS	2	X	
23	WASHER FLAT 3/8 SS 7/8 OD	4		
24	GASKET HH M34	3	X	

WELD SPECIFICATION
THE POST AND MAST ARM TO BE ROUND TAPERED TUBE FABRICATION WITH ONE SUBMERGED ARC LONGITUDINAL SEAM WELD WITH 100% PENETRATION 6" FROM BASE PLATE, FLANGE AND BUTT WELDED SHAFTS, EXCEPT FOR TUBES LESS THAN 5 IN DIAMETERS; FOR FEMALE SECTION OF SLIP JOINTED TUBES 10" AND GREATER: 1.5 X FEMALE SECTION INSIDE DIAMETER + 6 INCHES. FOR FEMALE SECTION OF SLIP JOINTED TUBES LESS THAN 10" FEMALE SECTION NOMINAL DIAMETER AND 60% FOR REMAINDER. GAS METAL ARC WELDING PROCESS WITH 60% PENETRATION MAY BE USED FOR REMAINDER OF WELDED FABRICATION.
WELD TESTING: 100% OF ALL WELDS VISUAL TESTED (VT), 100% OF ALL COMPLETE JOINT PENETRATION (CJP) WELDS ULTRASONIC TESTED (UT) BASED ON THE THINNEST MATING MATERIAL: (PER AASHTO 2013 5.15.5-WELD INSP) THICKNESS. < 6MM (0.25 IN) MT ≥ 6MM (0.25 IN) UT A RANDOM 30% OF ALL FILLET WELDS AND PARTIAL JOINT PENETRATION (PJP) LONGITUDINAL SEAM WELDS MAGNETIC PARTICLE TESTED (MT).
WELDING INSPECTION OF STRUCTURE SHALL BE IN ACCORDANCE WITH THE REQUIREMENTS OF WASHINGTON STATE DEPARTMENT OF TRANSPORTATIONS STANDARD SPECIFICATION SECTION 6-03.3(25) AND 2015 AASHTO WELD INSPECTION SECTION 14.4.4.8

STRUCTURE FINISH SPECIFICATION
GALV. OR PRIME COAT: HOT DIPPED GALV. PER ASTM A123 FINISH COAT: - COLOR: - FEDERAL OR RAL SPEC.: - WEIGHT W/GALV.: - WEIGHT W/GALV.&PAINT: SURFACE AREA: GAL. OF PAINT:

MILLERBERND 622 6TH ST. SO. WINSTED, MN 55395

THIS DOCUMENT CONTAINS CONFIDENTIAL INFORMATION AND IS THE PROPERTY OF MILLERBERND MFG AND MAY NOT BE COPIED, REPRODUCED OR DISCLOSED IN ANY MANNER WITHOUT THE EXPRESS WRITTEN CONSENT FROM MILLERBERND MFG

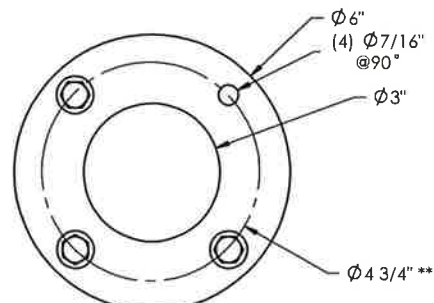
SALES ORDER NO.:	QTY:	STATE:	SHEET
74577	-	WA	1 OF 3

DESCRIPTION:	SUB POLE CAMERA RD LC3
EST. WEIGHT:	DRAWING NO: 74577-WA-LC3

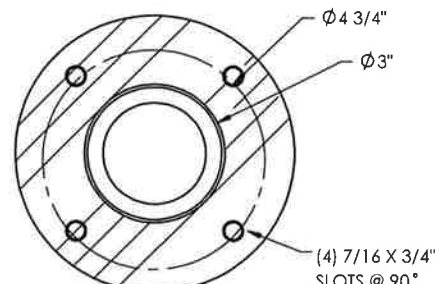
PROJECT NAME:	STATE OF WASHINGTON CAMERA POLES - LOAD CASE #3
PROJECT LOCATION:	WA

DWN BY: REBEKAH	DATE: 2/3/17
CHK BY:	DATE:

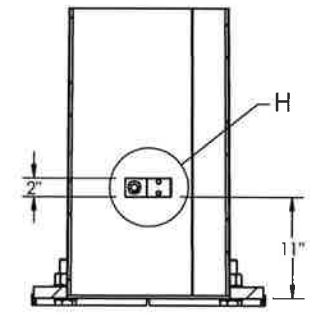
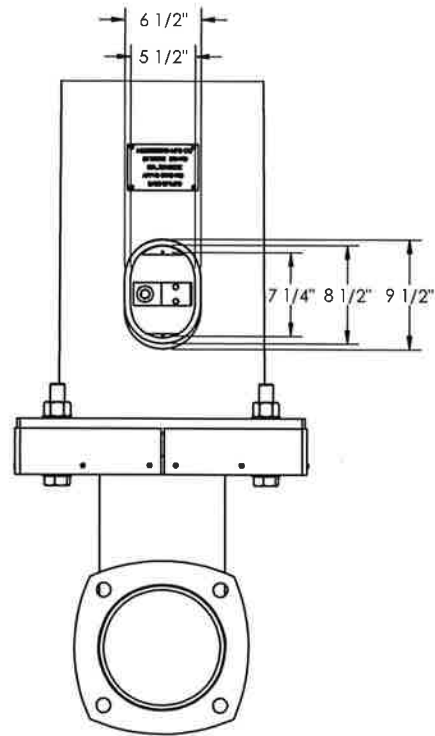
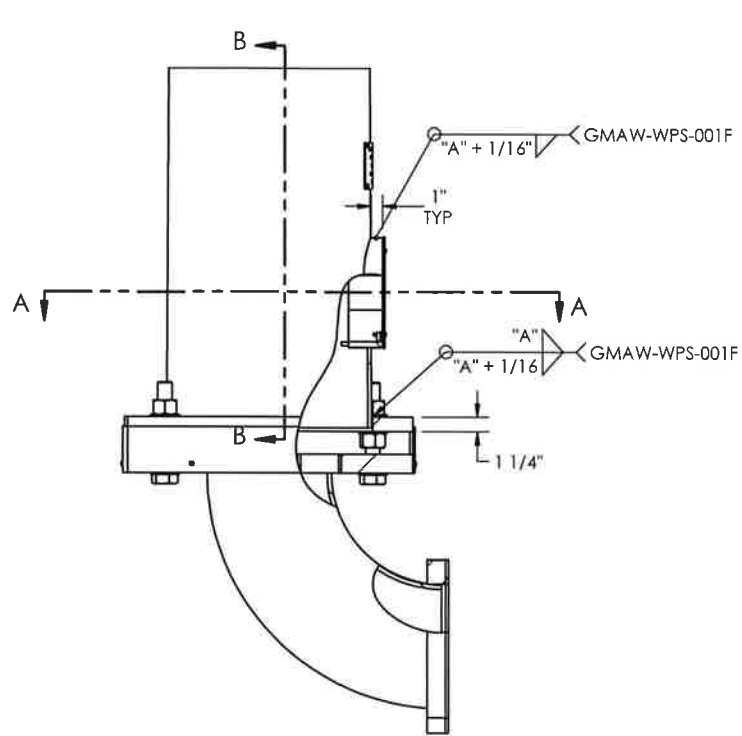
REV.	DESCRIPTION	DATE	DRFT
H	UPDATED WELD NOTE, UPDATED PER COMMENTS	6/12/2020	RK
G	REMOVED PLATE WASHER, UPDATED NOTES PER COMMENTS; UPDATED WPS TO MMC STANDARDS	5/8/2020	RK
F	DESIGN CRITERIA, LATEST WAS "2017"; CONNECTION BOLT WAS 8" LG	8/8/2017	RK



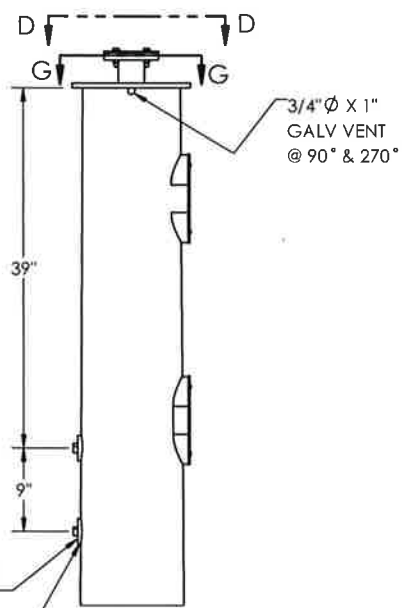
SECTION D-D
SCALE 1 : 4



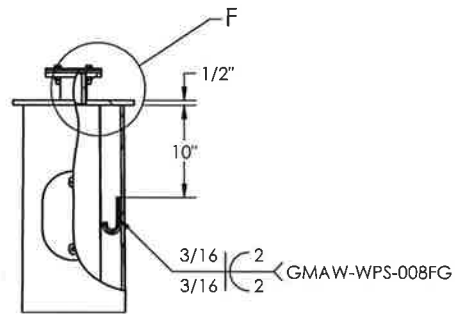
SECTION G-G
SCALE 1 : 4



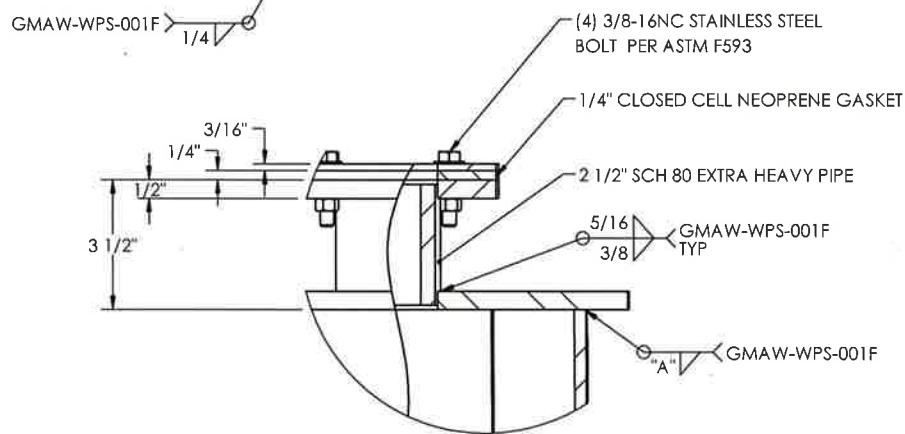
SECTION B-B
SCALE 1 : 20



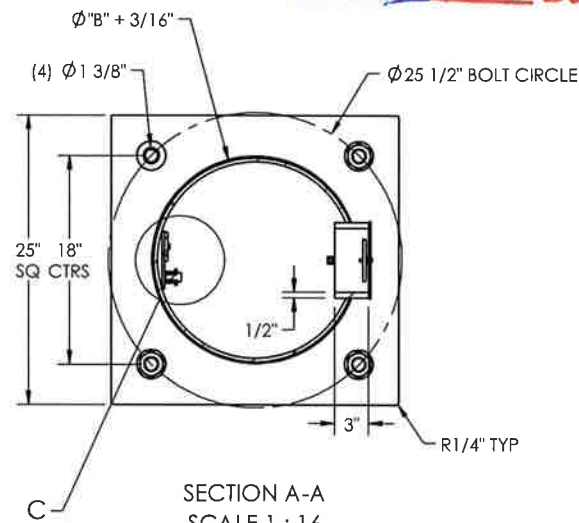
DETAIL F
SCALE 1 : 5



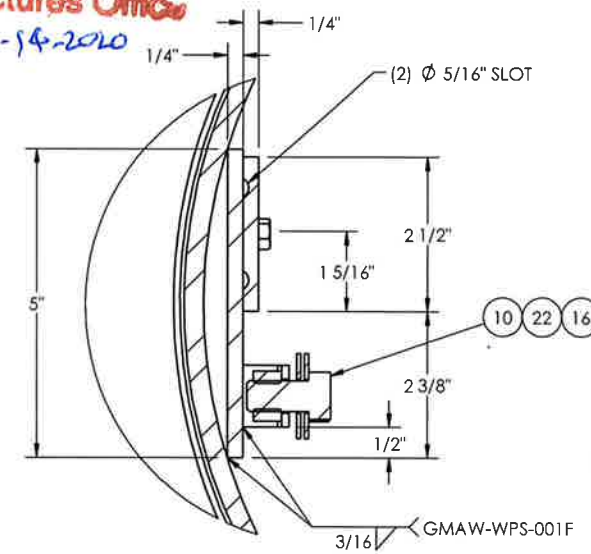
**VERIFY BOLT CIRCLE
AND BOLT DIA PRIOR TO FABRICATION**



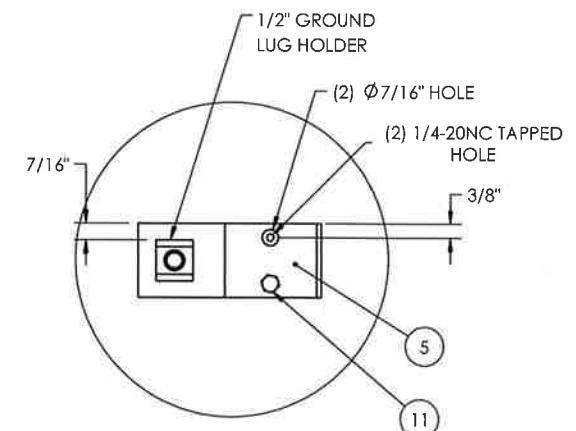
APPROVED
 Manufacturer's Pole Plan
 Approved For Listing As A
 Pre-Approved Drawing
 WSDOT Bridge & Structures Office
 By GB Date 9-14-2020



SECTION A-A
SCALE 1 : 16



DETAIL C
SCALE 1 : 3

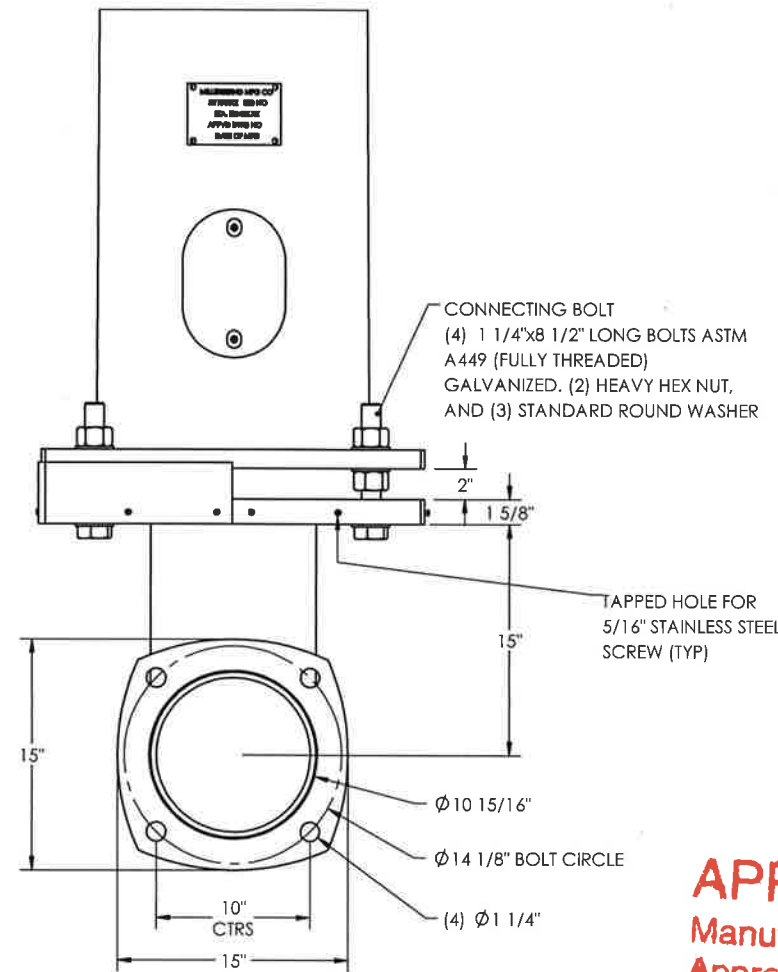
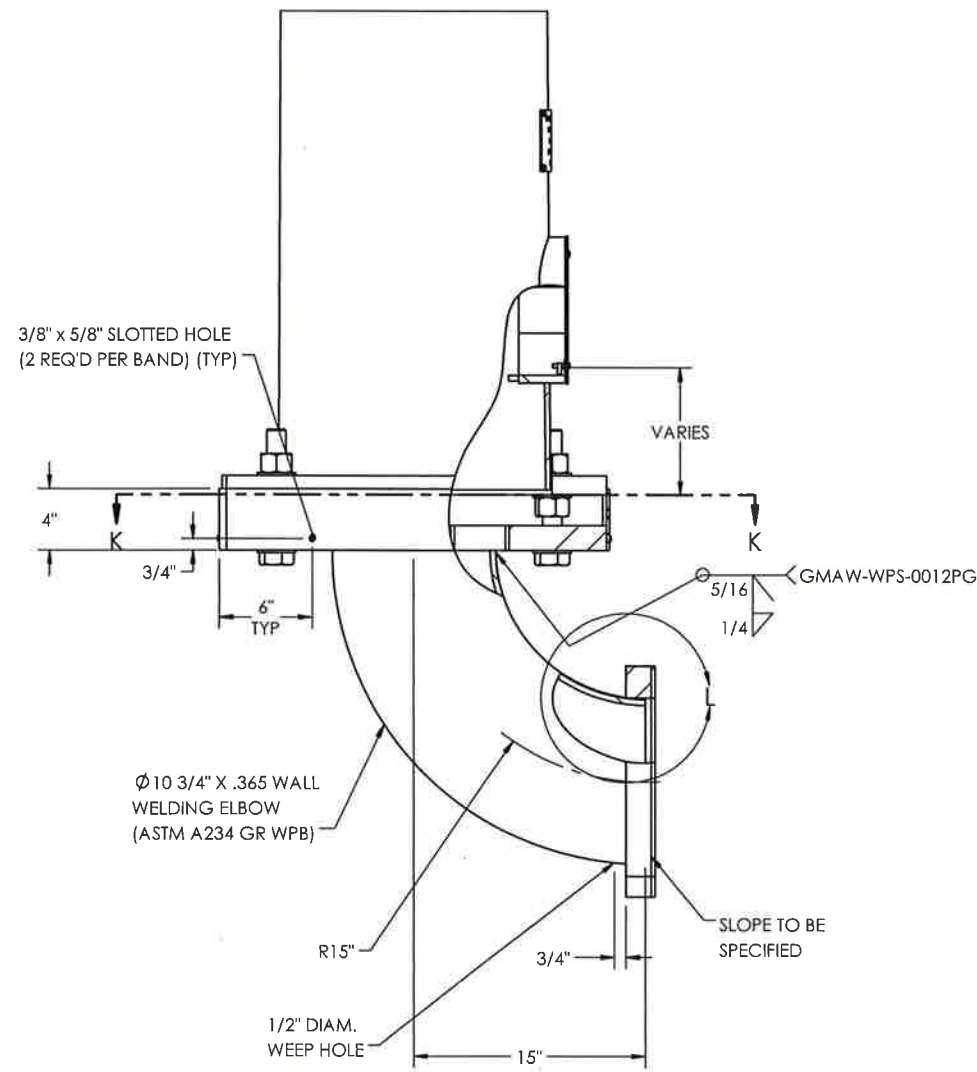


DETAIL H
SCALE 1 : 5



8-18-20 (EXPIRES 12-18-21)

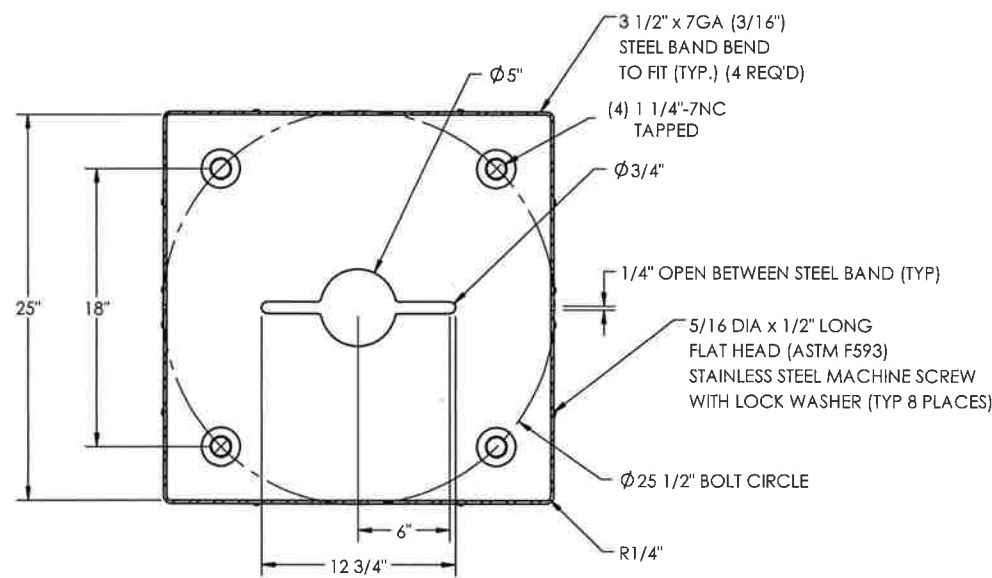
MILLERBERND		622 6TH ST. SO. WINSTED, MN 55395	
THIS DOCUMENT CONTAINS CONFIDENTIAL INFORMATION AND IS THE PROPERTY OF MILLERBERND MFG AND MAY NOT BE COPIED, REPRODUCED OR DISCLOSED IN ANY MANNER WITHOUT THE EXPRESS WRITTEN CONSENT FROM MILLERBERND MFG			
SALES ORDER NO.:	QTY:	STATE:	SHEET
74577	-	WA	2 OF 3
DESCRIPTION: SUB POLE CAMERA RD LC3			
EST. WEIGHT:	DRAWING NO: 74577-WA-LC3		
PROJECT NAME: STATE OF WASHINGTON CAMERA POLES - LOAD CASE #3			
PROJECT LOCATION: WA			
PROJECT NO.:	CONTROL/CONTRACT NO.:		
DWN BY: REBEKAH	DATE: 2/3/17		
CHK BY:	DATE:		



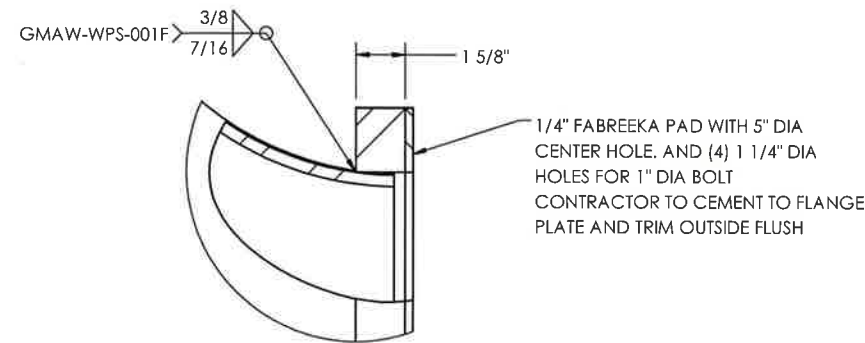
APPROVED
 Manufacturer's Pole Plan
 Approved For Listing As A
 Pre-Approved Drawing
 WSDOT Bridge & Structures Office
 By SB Date 9-14-2020



8-18-20 (EXPIRES 12-18-21)



SECTION K-K
 SCALE 1 : 12



DETAIL L
 SCALE 1 : 6

MILLERBERND		622 6TH ST. SO. WINSTED, MN 55395	
THIS DOCUMENT CONTAINS CONFIDENTIAL INFORMATION AND IS THE PROPERTY OF MILLERBERND MFG AND MAY NOT BE COPIED, REPRODUCED OR DISCLOSED IN ANY MANNER WITHOUT THE EXPRESS WRITTEN CONSENT FROM MILLERBERND MFG			
SALES ORDER NO.:	QTY:	STATE:	SHEET
74577	-	WA	3 OF 3
DESCRIPTION: SUB POLE CAMERA RD LC3			
EST. WEIGHT:		DRAWING NO:	
		74577-WA-LC3	
PROJECT NAME: STATE OF WASHINGTON CAMERA POLES - LOAD CASE #3			
PROJECT LOCATION: WA			
DWN BY: REBEKAH		DATE: 2/3/17	
CHK BY:		DATE:	