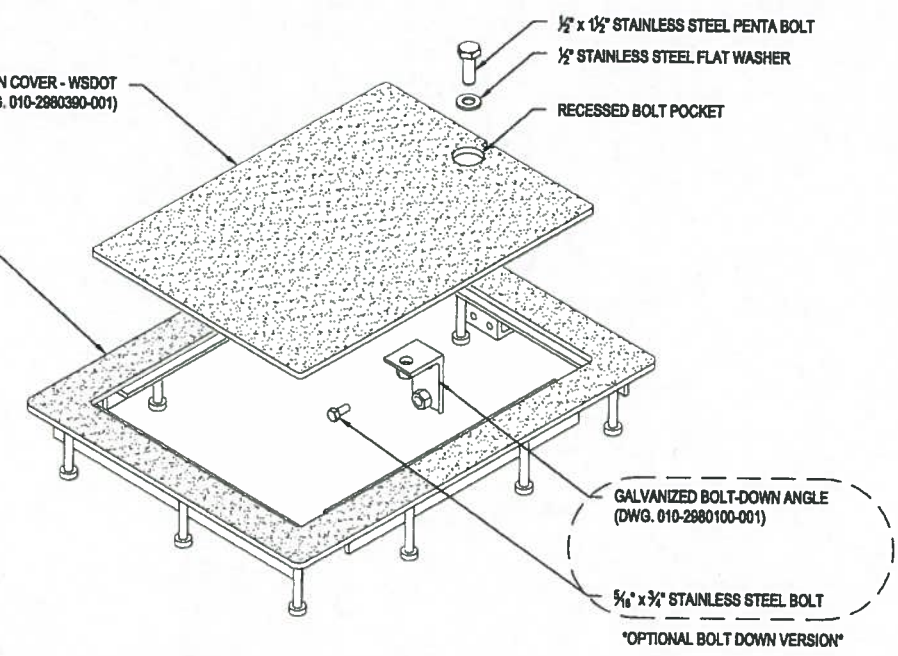


NON-SLIP COVER

TYPE 2 NS BOLT DOWN COVER - WSDOT
(DWG. 010-2980390-001)

TYPE 2 NS FRAME - WSDOT
(DWG. 010-2980315-001)



GALVANIZED BOLT-DOWN ANGLE
(DWG. 010-2980100-001)

5/8\"/>

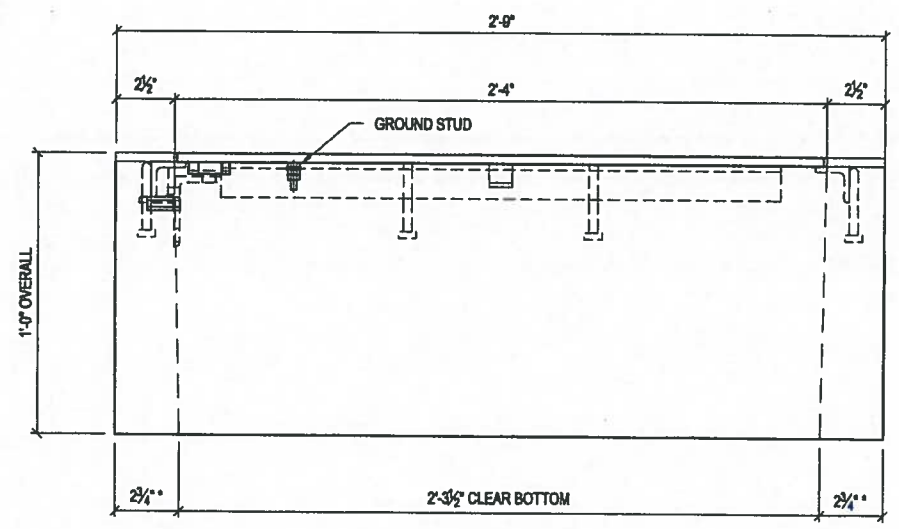
- STRUCTURAL NOTES**
1. CONCRETE: 28 DAY COMPRESSIVE STRENGTH $f_c = 4,000$ psi
 2. STEEL SHAPES: ASTM A-36 STRUCTURAL STEEL STANDARDS
 3. WWF: ASTM A-195 GRADE 65 (AASHTO M65)
 4. DESIGN: ACI-318-11 BUILDING CODE
 5. LOADS: ASTM C-857 "MINIMUM STRUCTURAL DESIGN LOADING FOR UNDERGROUND PRECAST CONCRETE UTILITY STRUCTURES"
22,500 LBS TEST LOAD ACTING OVER A 10" X 10" AREA
40 psi E.F.P. LATERAL SOIL PRESSURE
113 psi LIVE LOAD SURCHARGE
TOP OF JUNCTION BOX AT FINISHED GRADE
WATERTABLE BELOW BOTTOM OF JUNCTION BOX (ASSUMED)

SHIPPING WEIGHT
300 LBS

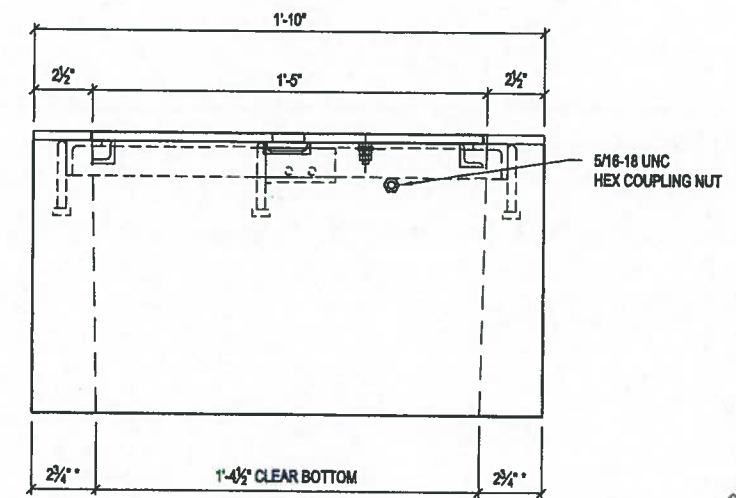
A
PLAN VIEW

APPROVED
Washington State Department of Transportation
HQ Traffic Operations Office
BY: *[Signature]* DATE: 3/29/2018

DOOR/FRAME ASSEMBLY DETAIL



VIEW A



VIEW B

* WALL THICKNESS WITH 1/4\"/>

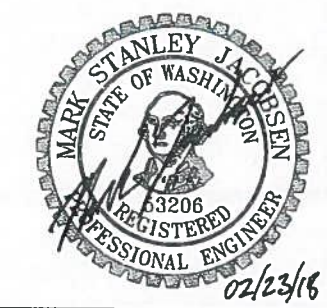


THIS DOCUMENT IS THE PROPERTY OF OLDCASTLE PRECAST, INC. IT IS CONFIDENTIAL, SUBMITTED FOR REFERENCE PURPOSES ONLY, AND SHALL NOT BE USED IN ANY WAY HARMFUL TO THE INTERESTS OF, OR WITHOUT THE WRITTEN PERMISSION OF OLDCASTLE PRECAST, INC. COPYRIGHT © 2017 OLDCASTLE PRECAST, INC. ALL RIGHTS RESERVED.

TYPE 2 JUNCTION BOX w/FRAME - WSDOT
CUSTOMER LAYOUT

STANDARD PRODUCT
CUSTOMER

DATE	SALES	DRAWN	ENGINEER	CHECKED	SALES ORDER
03/02/2017		MKC			
DRAWING NUMBER					SHEET
010-0650110-001					1 OF 3
REVISION				REV DATE	
B				2/9/2018	



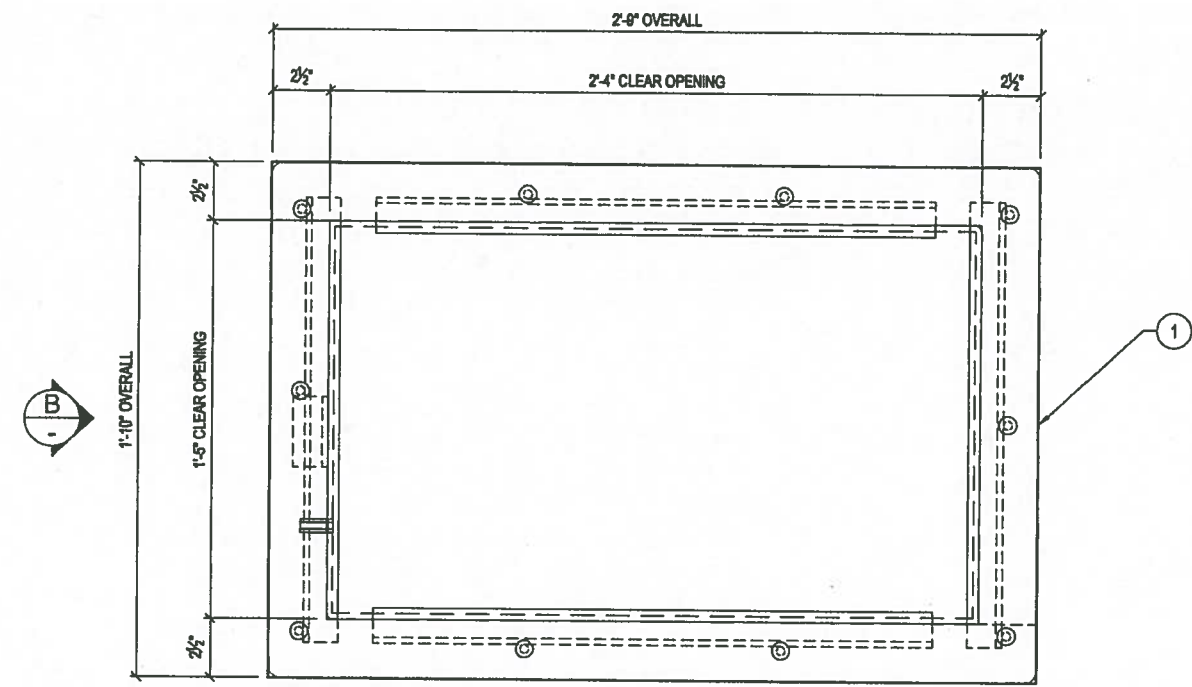
B	REVISED BOLT DOWN DRAWING NUMBER	C/JC
REVISION	DESCRIPTION	BY

PRODUCTION QUANTITY
 (1) TYPE 2 JUNCTION BOX w/ NS FRAME - WSDOT

PRODUCT WEIGHT
 210 LBS

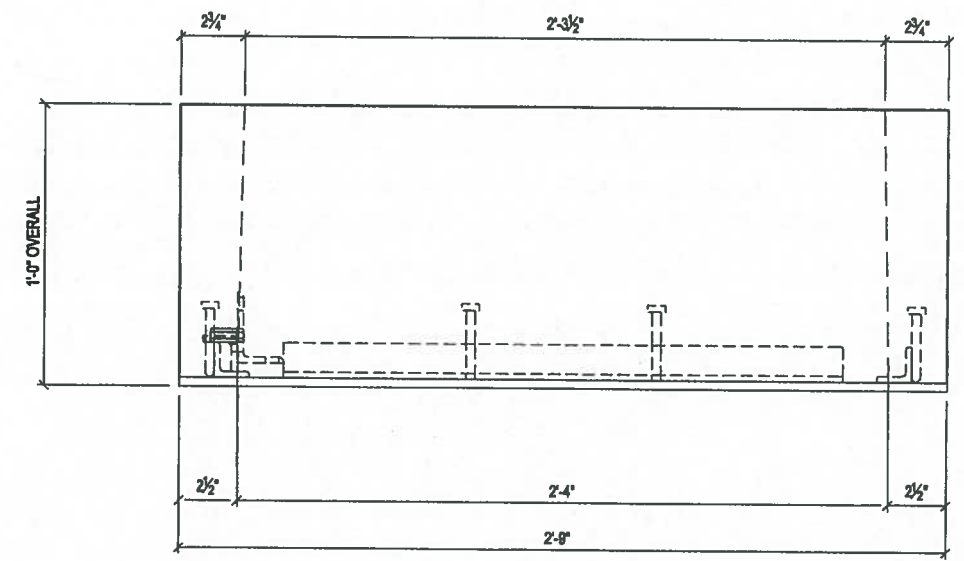
- SHOP NOTES
- USE "TYPE 2 JUNCTION BOX" STEEL FORM
 - CONCRETE FINISH: FLAT FLOAT FINISH WITH MACHINED EDGES

BILL OF MATERIALS			
#	QUANTITY	DESCRIPTION	ITEM #
	0.05 yds	CONCRETE MIX - SCC	5010000
	6.67 sqf	MESH - (SQUARE FEET)	5500000
1	1 ea	TYPE 2 NS FRAME - WSDOT	2980315

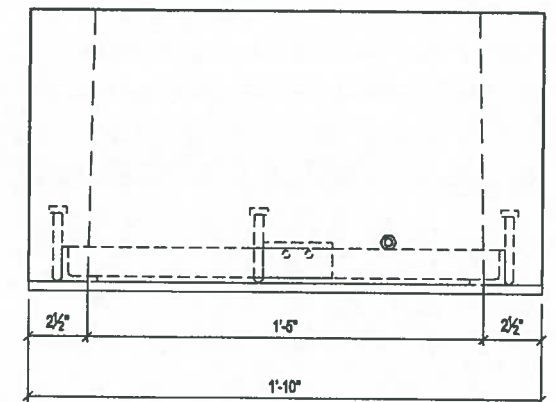


PLAN VIEW
 LAYOUT (SHOWN AS POURED)

APPROVED
 Washington State Department of Transportation
 HQ Traffic Operations Office
 BY: [Signature] DATE: 3/29/2018



VIEW A



VIEW B

B	NO CHANGES TO THIS SHEET	CJC
REVISION	DESCRIPTION	BY



Oldcastle Precast
 P.O. BOX 885 ALBURN WA 98071-0885
 PHONE: 800-882-1538 FAX: 253-735-4291

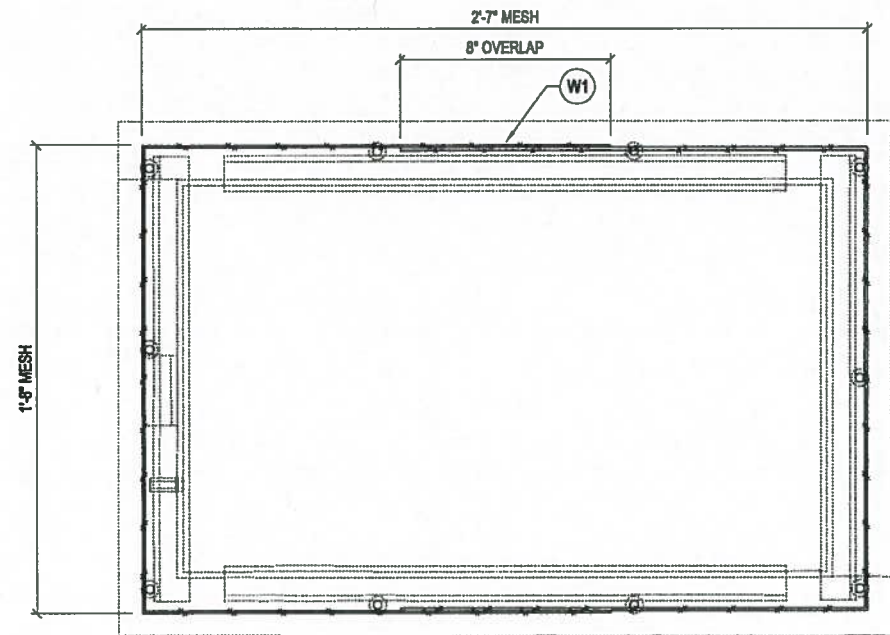
THIS DOCUMENT IS THE PROPERTY OF OLDCASTLE PRECAST, INC. IT IS CONFIDENTIAL, SUBMITTED FOR REFERENCE PURPOSES ONLY, AND SHALL NOT BE USED IN ANY WAY INADVERTENT TO THE INTERESTS OF, OR WITHOUT THE WRITTEN PERMISSION OF OLDCASTLE PRECAST, INC. COPYRIGHT © 2017 OLDCASTLE PRECAST, INC. ALL RIGHTS RESERVED.

TYPE 2 JUNCTION BOX w/FRAME - WSDOT
 LAYOUT DETAILS

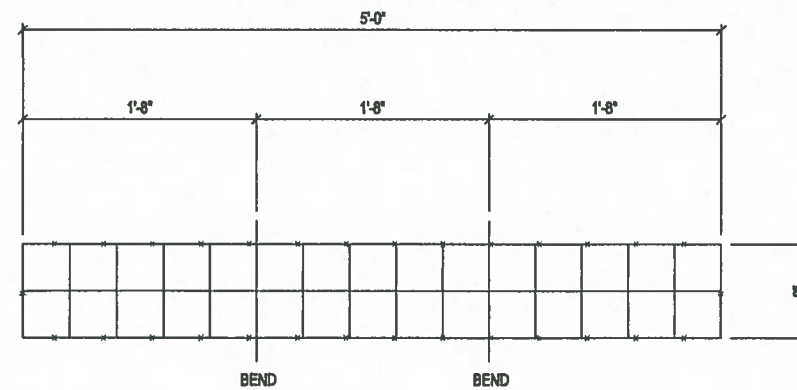
STANDARD PRODUCT
 CUSTOMER

DATE	SALES	DRAWN	ENGINEER	CHECKED	SALES ORDER
03/02/2017		MKC			
DRAWING NUMBER					SHEET
010-0650110-001					2 OF 3
REVISION B					REV DATE
					2/9/2018

REINFORCEMENT CUT LIST				
#	QTY	MATERIAL	LENGTH	SHAPE
W1	2	MESH 4X4 - W2.9 X W2.9		BENT




PLAN VIEW
 REINFORCEMENT (SHOWN AS POURED)

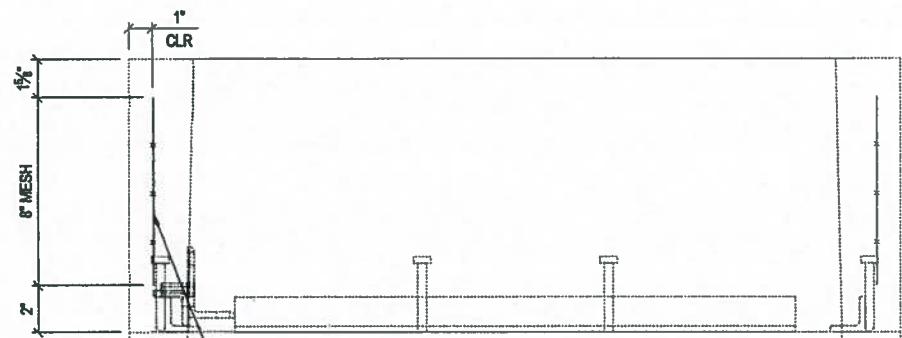


W1 DETAIL
 (OVERLAP = 8")

APPROVED

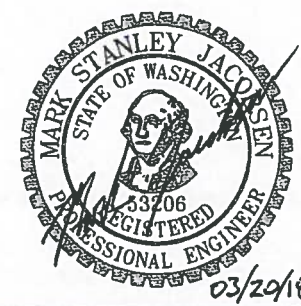
Washington State Department of Transportation
 HQ Traffic Operations Office


BY: [Signature] DATE: 3/29/2018



VIEW A
 W1 **MESH WIRE TIED TO HEADED ANCHOR SHEAR STUD**

REVISION	DESCRIPTION	BY
C	REVISED OVERLAP DIMENSION IN PLAN VIEW	CJC





P.O. BOX 686 ALBUQU, WA 98071-0686
 PHONE: 800-882-1530 FAX: 253-726-4201

THIS DOCUMENT IS THE PROPERTY OF OLDCASTLE PRECAST, INC. IT IS CONFIDENTIAL, SUBMITTED FOR REFERENCE PURPOSES ONLY, AND SHALL NOT BE USED IN ANY WAY INALTRIOUS TO THE INTERESTS OF, OR WITHOUT THE WRITTEN PERMISSION OF OLDCASTLE PRECAST, INC. COPYRIGHT © 2017 OLDCASTLE PRECAST, INC. ALL RIGHTS RESERVED.

TYPE 2 JUNCTION BOX w/FRAME - WSDOT
 REINFORCEMENT DETAILS

STANDARD PRODUCT

CUSTOMER

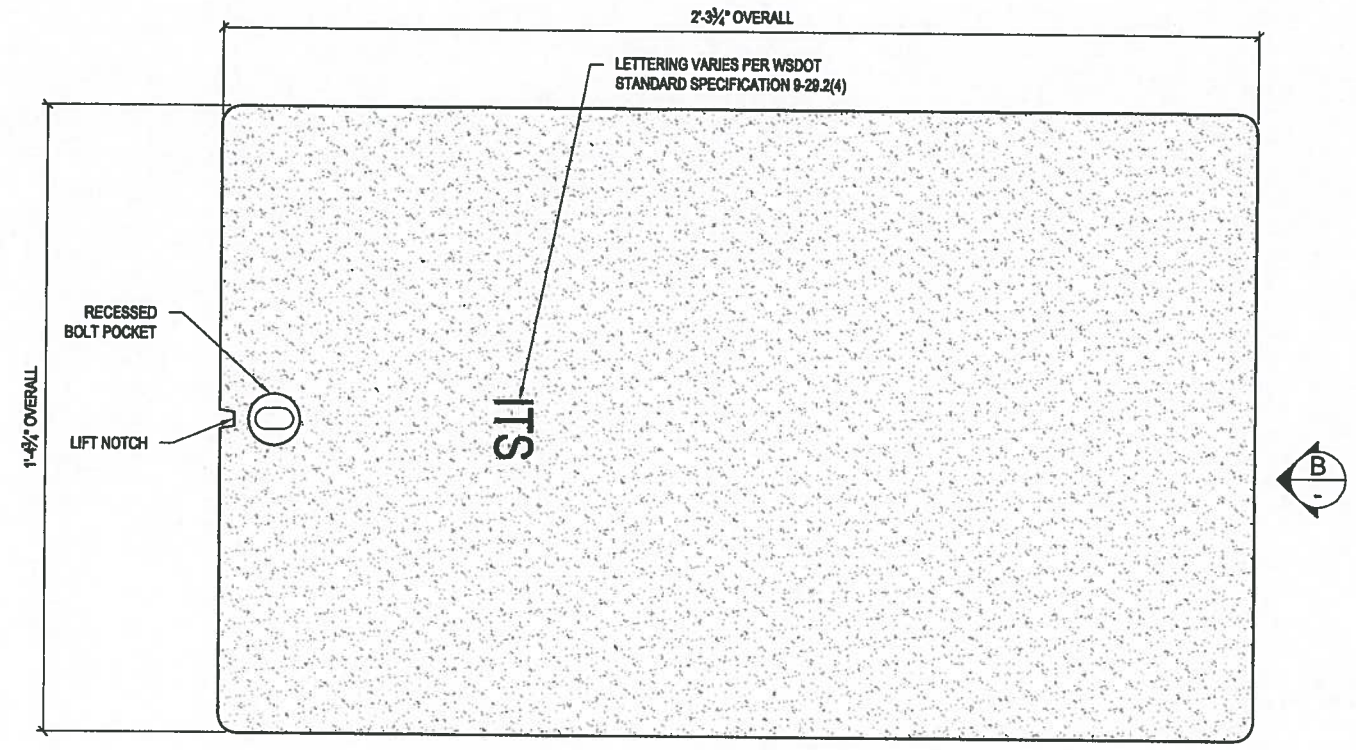
DATE	SALES	DRAWN	ENGINEER	CHECKED	SALES ORDER
03/02/2017		MKC			

DRAWING NUMBER: 010-0650110-001

REVISION	DATE	SHEET
C	3/18/18	3 OF 3

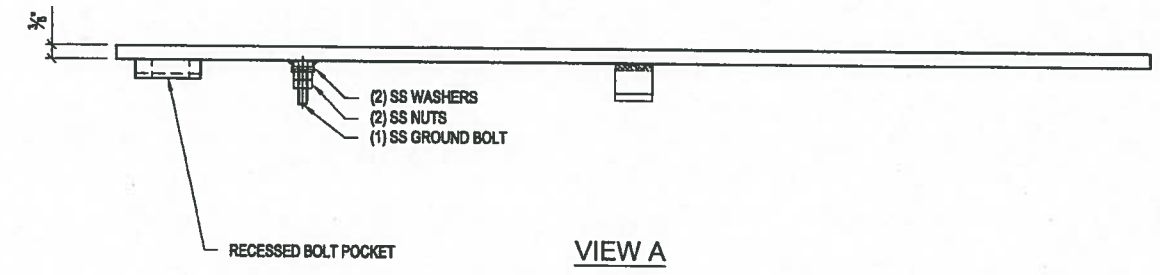
- STRUCTURAL NOTES**
- MATERIAL: ASTM A36 STRUCTURAL STEEL STANDARDS
 - ASSEMBLY: AWS D1.1 WELDING STANDARDS
 - COATING: ASTM A123 HOT-DIP GALVANIZING STANDARDS

- GENERAL NOTES**
- FRAMES AVAILABLE TO USE WITH THIS DOOR: 2980315 (TYPE 2 NS FRAME - WSDOT)

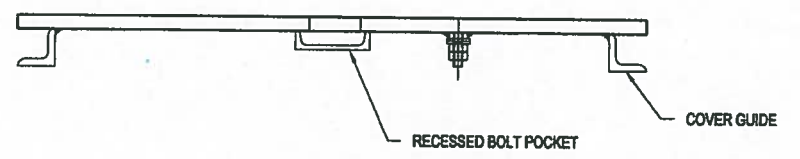


PLAN VIEW

APPROVED
 Washington State Department of Transportation
 HQ Traffic Operations Office
 BY: [Signature] DATE: 3/29/2018



VIEW A



VIEW B

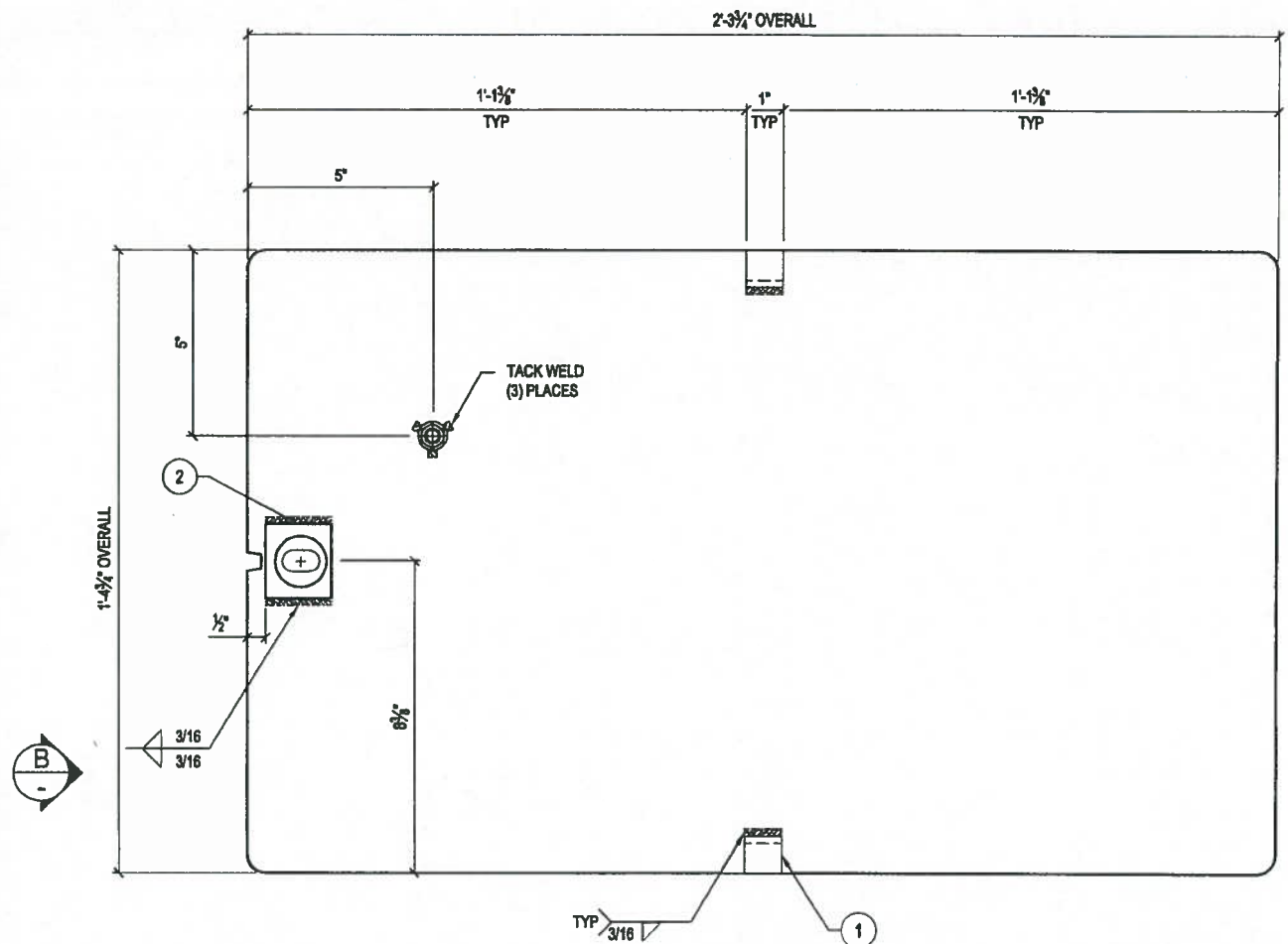
ENGINEERS SEAL:
 DOOR SHOP DRAWINGS REVIEWED FOR GENERAL CONFORMANCE TO THE INTENT OF WSDOT STANDARD PLAN J-40.10-04 ONLY. DOOR AND FRAME TO BE TESTED IN ACCORDANCE TO SECTION 9-29.2(5) OF THE WSDOT STANDARD SPECIFICATION TO ENSURE STRUCTURAL SUITABILITY.



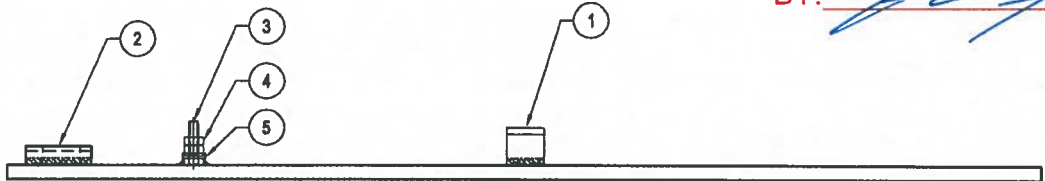
THIS DOCUMENT IS THE PROPERTY OF OLDCASTLE PRECAST, INC. IT IS CONFIDENTIAL, SUBMITTED FOR REFERENCE PURPOSES ONLY, AND SHALL NOT BE USED IN ANY WAY INHAUSOR TO THE INTERESTS OF, OR WITHOUT THE WRITTEN PERMISSION OF OLDCASTLE PRECAST, INC. COPYRIGHT © 2017 OLDCASTLE PRECAST, INC. ALL RIGHTS RESERVED.

TYPE 2 NS BOLT DOWN COVER -WSDOT					
CUSTOMER LAYOUT					
STANDARD PRODUCT					
CUSTOMER					
DATE	SALES	DRAWN	ENGINEER	CHECKED	SALES ORDER
02/21/2017		MKC			
DRAWING NUMBER				REVISION	SHEET
010-2980390-001				B	1 OF 2
				REV DATE	
				2/9/2018	

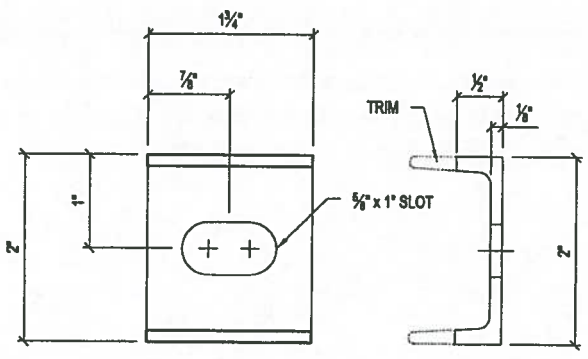
B	NO CHANGES TO THIS SHEET	CJC
REVISION	DESCRIPTION	BY



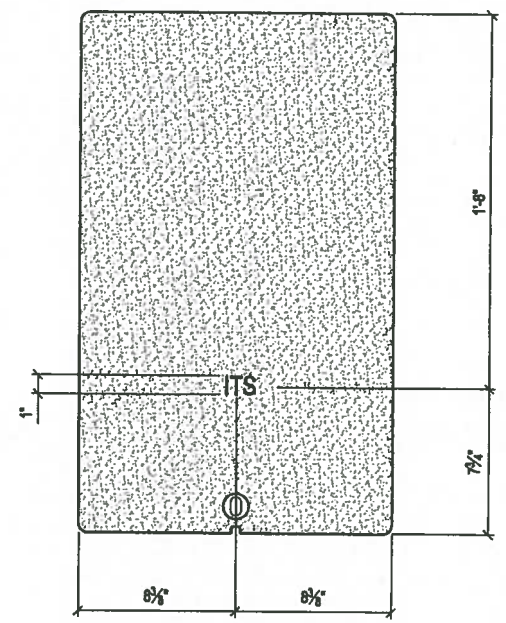
PLAN VIEW
(UNDERSIDE OF COVER SHOWN)



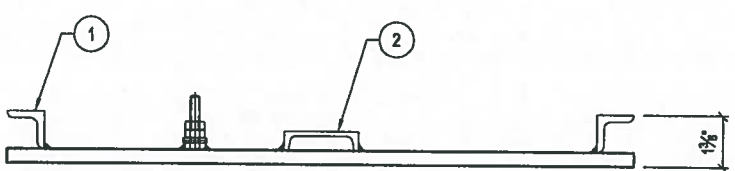
VIEW A



PART No.2



LETTERING DETAIL



VIEW B

- SHOP NOTES**
- OVERALL DIMENSIONS HAVE A TOLERANCE OF $\pm 1/16$ "
 - ALL WELDS ARE $3/16$ " FILLET UNLESS OTHERWISE NOTED
 - GRIND ALL SHARP EDGES
 - COVER TO BE HOT DIPPED GALVANIZED AFTER FABRICATION
 - WEIGHT BEFORE GALVANIZING: 50 lbs

BILL OF MATERIALS			
#	QUANTITY	DESCRIPTION	ITEM #
	1 ea	SLIPNOT PLATE 3/8"-TYPE2BD COVER PLATE	5541025
	0.19 lbs	ANGLE 1" x 1" x 3/16"	5510200
	1 ea	CHANNEL 2" x 1" x 1/8"	5310045
	50 lbs	GALVANIZING PER Lb. FOR SLIPNOT	5800010
3	1 ea	1/4" -20 NC x 1" 18-8 SCREW - SS	5182029
4	2 ea	1/4" -20 NC FINISHED HEX NUT - SS	5182027
5	2 ea	1/4" 18-8 FLAT WASHER - SS	5182028

LAYOUT CUT LIST			
#	QUANTITY	DESCRIPTION	SIZE
1	2 ea	ANGLE 1" x 1" x 3/16"	0'-1"
2	1 ea	CHANNEL 2" x 1" x 1/8"	SHT 2

APPROVED
Washington State Department of Transportation
HQ Traffic Operations Office
BY: [Signature] DATE: 3/29/2018

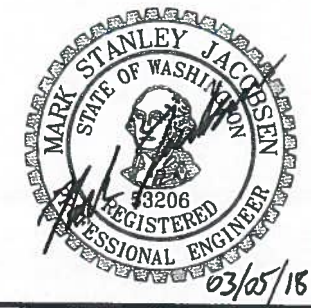
ENGINEERS SEAL:
DOOR SHOP DRAWINGS REVIEWED FOR GENERAL CONFORMANCE TO THE INTENT OF WSDOT STANDARD PLAN J-40.10-04 ONLY. DOOR AND FRAME TO BE TESTED IN ACCORDANCE TO SECTION 9-29.2(5) OF THE WSDOT STANDARD SPECIFICATION TO ENSURE STRUCTURAL SUITABILITY.



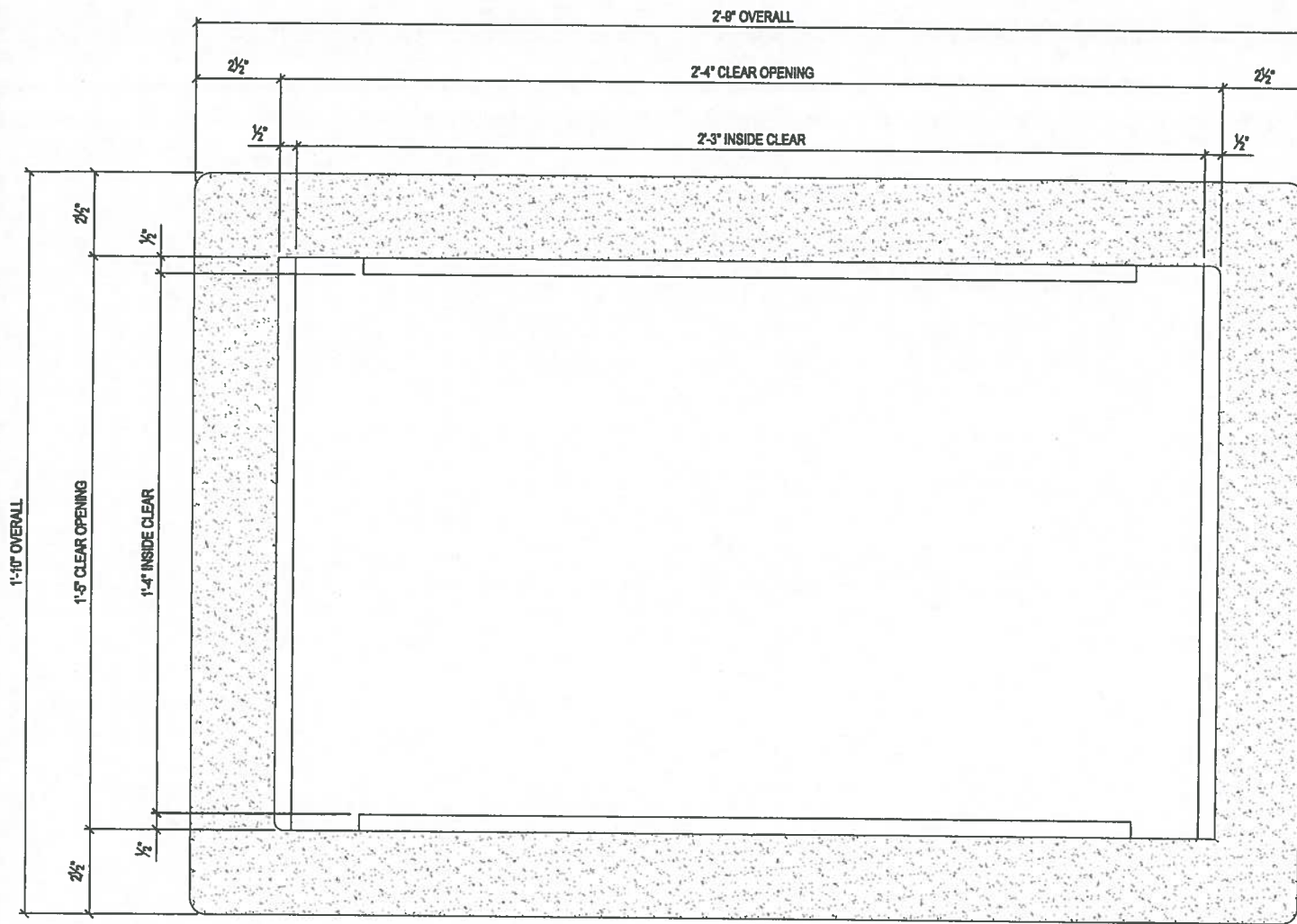
THIS DOCUMENT IS THE PROPERTY OF OLDCASTLE PRECAST, INC. IT IS CONFIDENTIAL, SUBMITTED FOR REFERENCE PURPOSES ONLY, AND SHALL NOT BE USED IN ANY WAY PARALLEL TO THE INTERESTS OF, OR WITHOUT THE WRITTEN PERMISSION OF OLDCASTLE PRECAST, INC. COPYRIGHT © 2017 OLDCASTLE PRECAST, INC. ALL RIGHTS RESERVED.

TYPE 2 NS BOLT DOWN COVER -WSDOT
ASSEMBLY AND WELD DETAILS

STANDARD PRODUCT					
CUSTOMER					
DATE	SALES	DRAWN	ENGINEER	CHECKED	SALES ORDER
02/21/2017		MKC			
DRAWING NUMBER				REVISION	SHEET
010-2980390-001				B	2 OF 2
				REV DATE	
				2/9/2018	



B	REVISED PART NO 2	CJC
REVISION	DESCRIPTION	BY



STRUCTURAL NOTES

1. MATERIAL: ASTM A36 STRUCTURAL STEEL STANDARDS
2. ASSEMBLY: AWS D1.1 WELDING STANDARDS
3. COATING: ASTM A123 HOT-DIP GALVANIZING STANDARDS

GENERAL NOTES

1. FRAMES/DOORS AVAILABLE TO USE WITH THIS DOOR:
2980390 (TYPE 2 NS BOLT DOWN COVER - WSDOT)

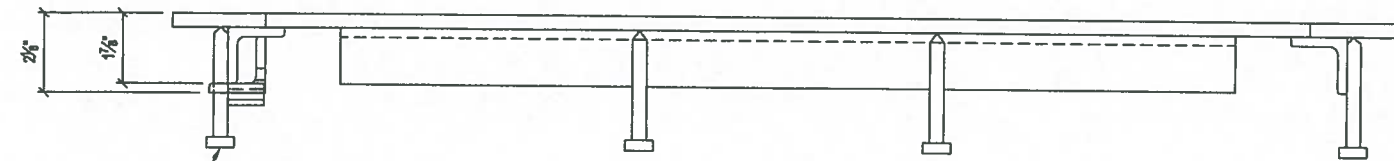


PLAN VIEW

APPROVED

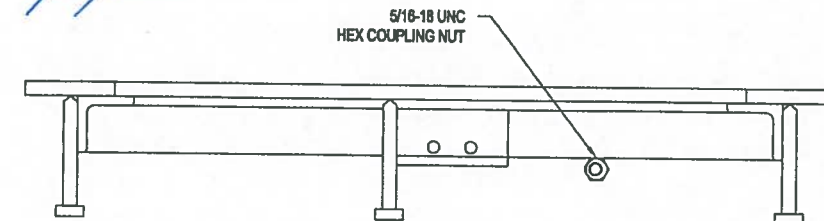
Washington State Department of Transportation
HQ Traffic Operations Office

BY: *[Signature]* DATE: 3/29/2018



CONCRETE ANCHORS

VIEW A



5/16-18 UNC
HEX COUPLING NUT

VIEW B

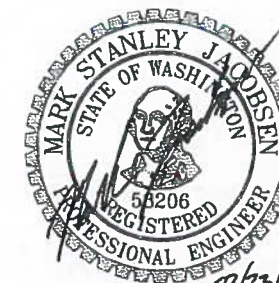


THIS DOCUMENT IS THE PROPERTY OF OLDCASTLE PRECAST, INC. IT IS CONFIDENTIAL, SUBMITTED FOR REFERENCE PURPOSES ONLY, AND SHALL NOT BE USED IN ANY WAY HARMFUL TO THE INTERESTS OF, OR WITHOUT THE WRITTEN PERMISSION OF OLDCASTLE PRECAST, INC. COPYRIGHT © 2017 OLDCASTLE PRECAST, INC. ALL RIGHTS RESERVED.

TYPE 2 NS FRAME
CUSTOMER LAYOUT

STANDARD PRODUCT

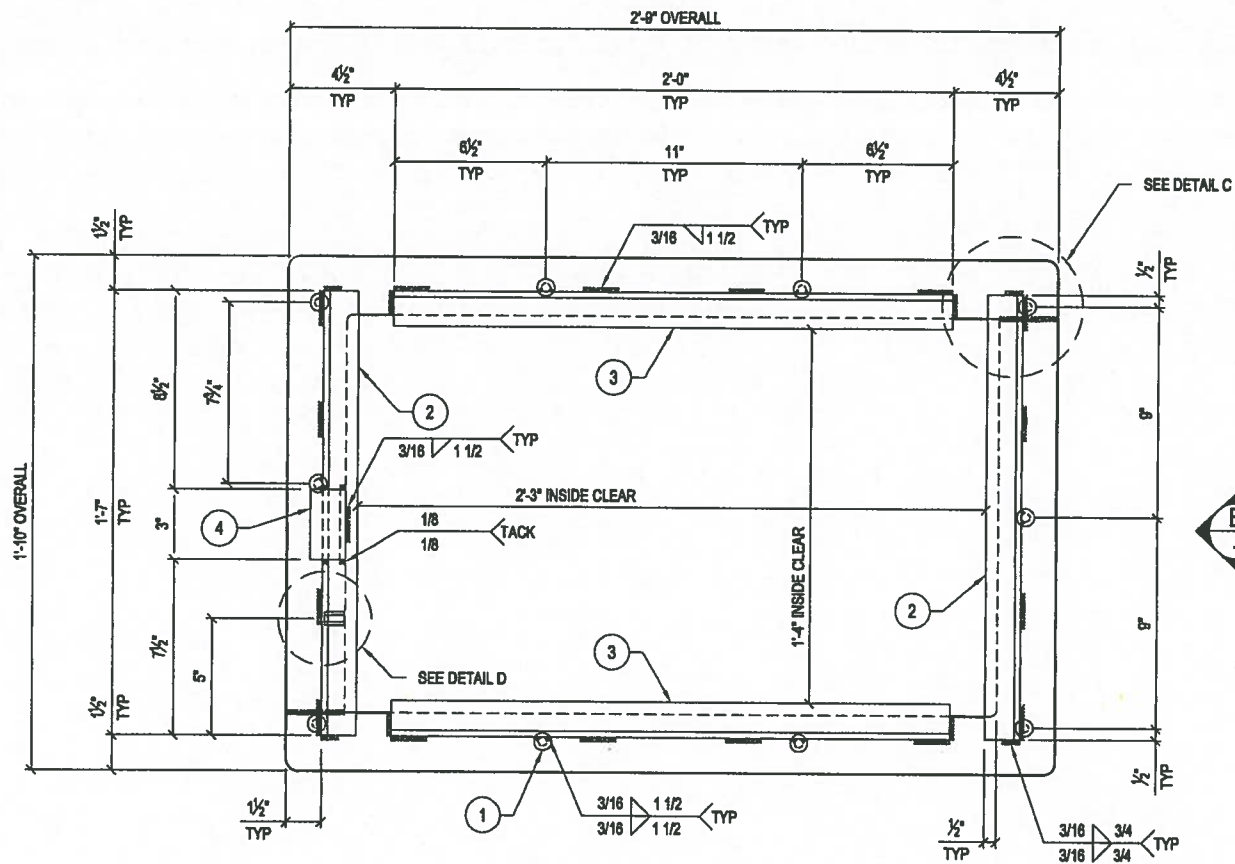
CUSTOMER



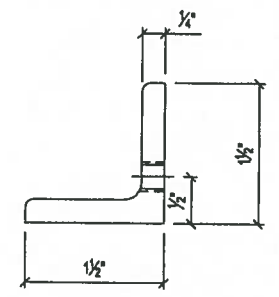
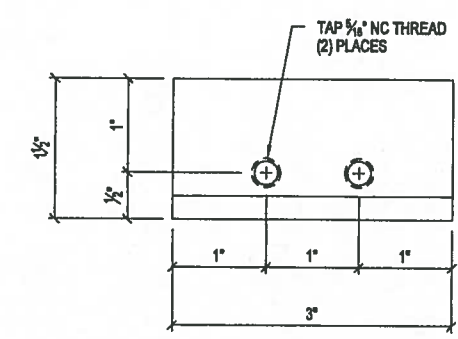
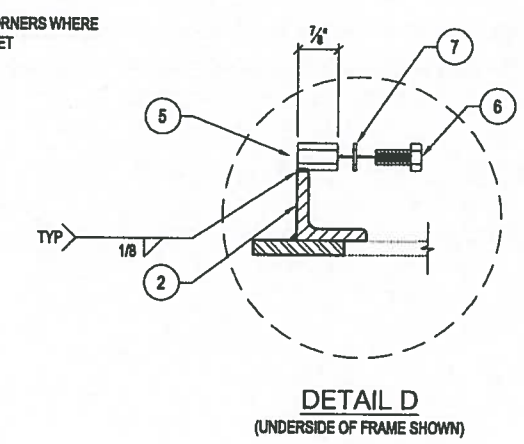
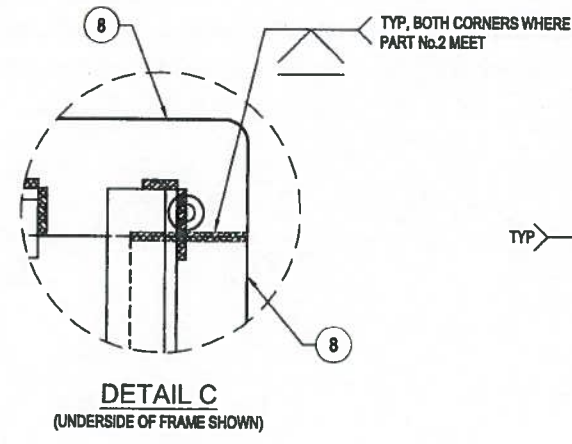
02/23/18

REVISION	DESCRIPTION	BY
A	NO CHANGES TO THIS SHEET	CJC

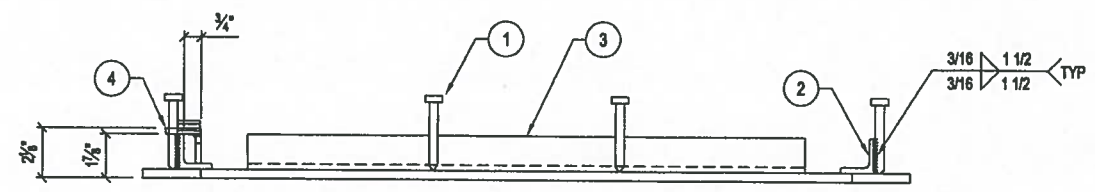
DATE	SALES	DRAWN	ENGINEER	CHECKED	SALES ORDER
02/14/2017		MKC			
DRAWING NUMBER				REVISION	SHEET
010-2980315-001				A REV DATE 2/8/18	1 OF 2



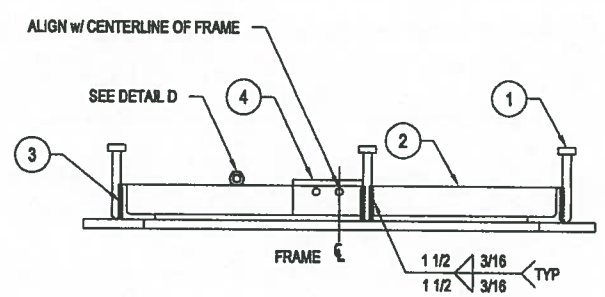
PLAN VIEW



PART No. 4



VIEW A



VIEW B

SHOP NOTES

1. OVERALL DIMENSIONS HAVE A TOLERANCE OF $\pm 1/16$ "
2. ALL WELDS ARE $3/16$ " FILLET UNLESS OTHERWISE NOTED
3. GRIND ALL SHARP EDGES
4. FRAME TO BE HOT DIPPED GALVANIZED AFTER FABRICATION
5. WEIGHT BEFORE GALVANIZING: 51 lbs
6. PART 8 MAY BE SINGLE PIECE IN LIEU OF 2 PIECE FRAME

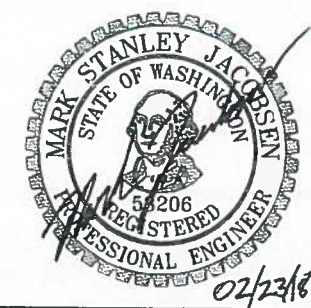
BILL OF MATERIALS

#	QUANTITY	DESCRIPTION	ITEM #
1	10 ea	STUD 3/8" X 3-1/8"	6910455
	17.16 lbs	ANGLE 1-1/2" X 1-1/2" X 1/4"	5510211
	51 lbs	GALVANIZING PER LB. FOR SLIPNOT	5800010
5	1 ea	5/16" x 7/8" COUPLING NUT - SS	5182032
6	1 ea	5/16" x 3/4" HEX CAP SCREW - SS	5182033
7	3 ea	5/16" FLAT WASHER - SS	5182034
8	2 ea	SLIPNOT PLATE 3/8" -TYPE 2 FRAME PIECE	5541030

LAYOUT CUT LIST

#	QUANTITY	DESCRIPTION	SIZE
2	2 ea	ANGLE 1- 1/2" x 1- 1/2" x 1/4"	19"
3	2 ea	ANGLE 1- 1/2" x 1- 1/2" x 1/4"	24"
4	1 ea	ANGLE 1- 1/2" x 1- 1/2" x 1/4"	SHT 2

APPROVED
 Washington State Department of Transportation
 HQ Traffic Operations Office
 BY: *[Signature]* DATE: 3/29/2018



THIS DOCUMENT IS THE PROPERTY OF OLDCASTLE PRECAST, INC. IT IS CONFIDENTIAL, SUBMITTED FOR REFERENCE PURPOSES ONLY, AND SHALL NOT BE USED IN ANY WAY UNLESS APPROVED BY THE INTERESTS OF, OR WITHOUT THE WRITTEN PERMISSION OF OLDCASTLE PRECAST, INC. COPYRIGHT © 2017 OLDCASTLE PRECAST, INC. ALL RIGHTS RESERVED.

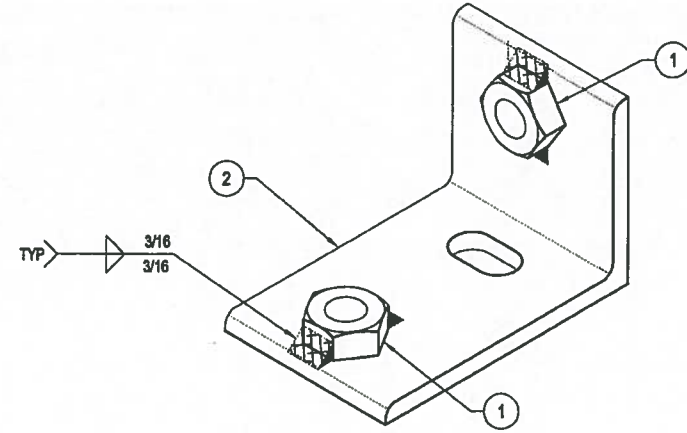
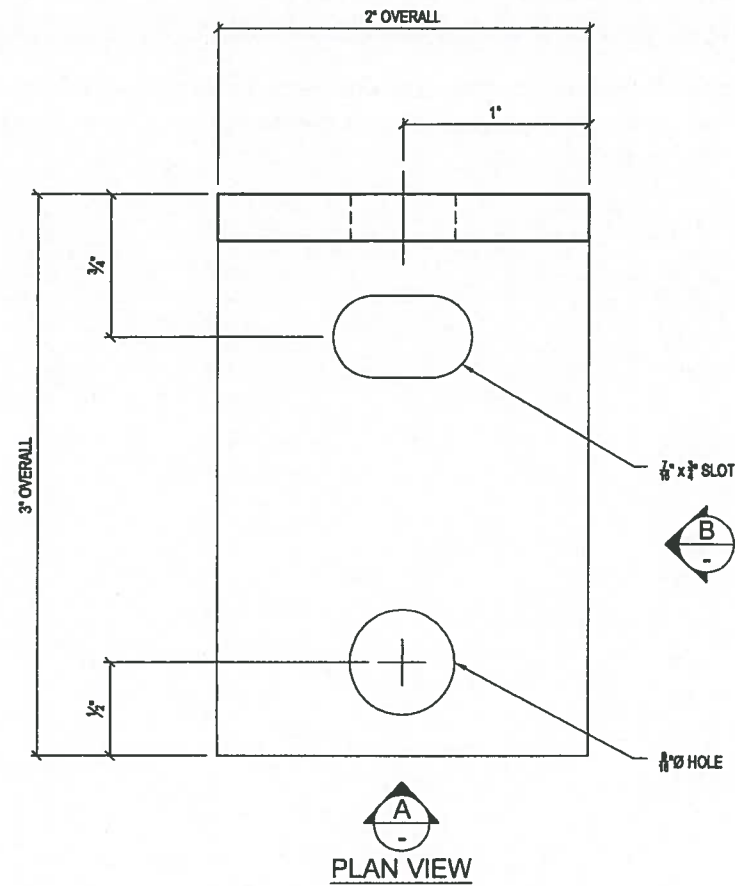
TYPE 2 NS FRAME
 ASSEMBLY AND WELD DETAILS

STANDARD PRODUCT
 CUSTOMER

DATE	SALES	DRAWN	ENGINEER	CHECKED	SALES ORDER
02/14/2017		MKC			

DRAWING NUMBER: 010-2980315-001
 REVISION B REV DATE 2/8/2018
 SHEET 2 OF 2

REVISION	DESCRIPTION	BY
B	CHANGED WELD IN PLAN VIEW TO TACK WELD - ADDED SHOP NOTE 6 - REVISED BOM	CJC

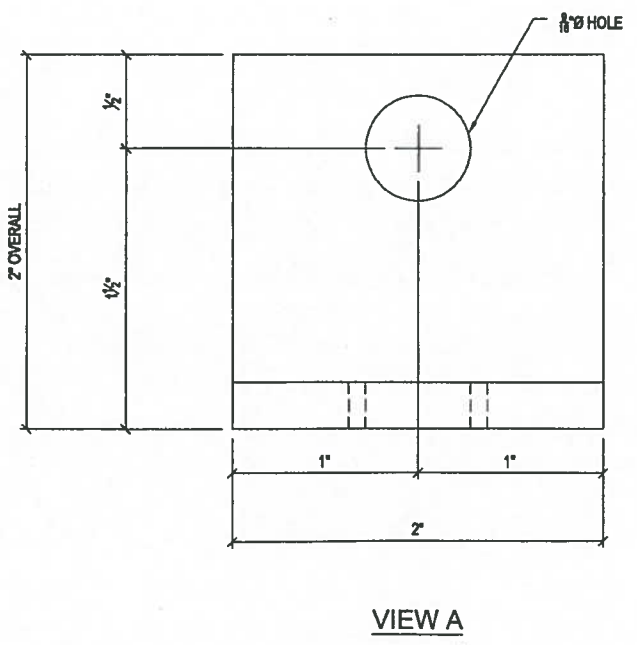


BOLT DOWN ASSEMBLY

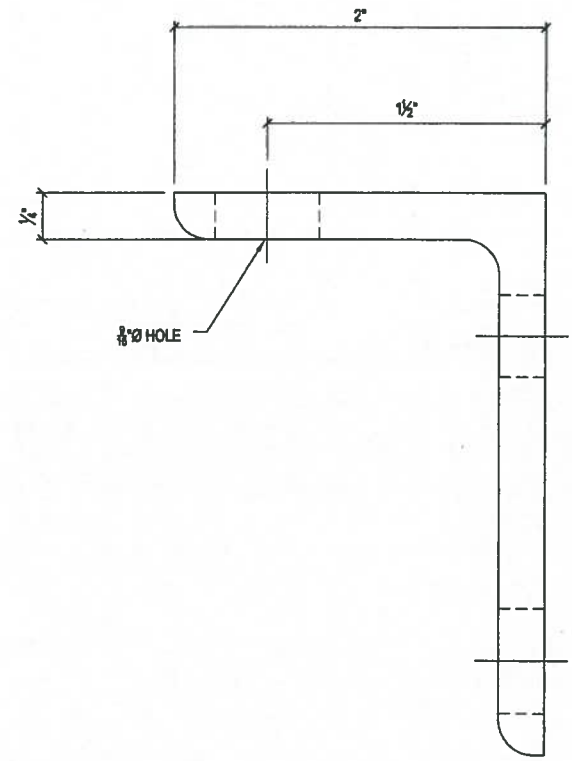
- STRUCTURAL NOTES**
- MATERIAL: ASTM A36 STRUCTURAL STEEL STANDARDS
 - ASSEMBLY: AWS D1.1 WELDING STANDARDS
 - COATING: ASTM A123 HOT-DIP GALVANIZING STANDARDS

BILL OF MATERIALS			
#	QUANTITY	DESCRIPTION	ITEM #
1	2 ea	1/2" -13 NC 304 SS FINISHED HEX NUT	5182028
	0.68 lbs	ANGLE 3" x 2" x 1/4"	5510220
	2 lbs	GALVANIZING PER Lb.	5800000

LAYOUT CUT LIST			
#	QUANTITY	DESCRIPTION	SIZE
2	1 ea	ANGLE 2" x 3" x 1/4"	2"



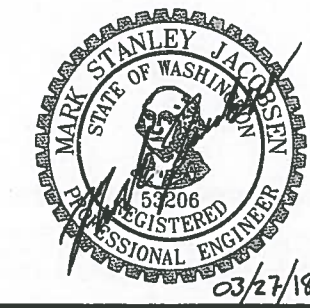
VIEW A



VIEW B

BILL OF MATERIALS - KIT			
#	QUANTITY	DESCRIPTION	ITEM #
	1 ea	BOLT DOWN ANGLE - WSDOT	2980100
	1 ea	1/2" x 1 1/2" PENTA HEAD - SS	5182030
	1 ea	5/16" 3/4" HEX CAP SCREW - GS	5182033

APPROVED
 Washington State Department of Transportation
 HQ Traffic Operations Office
 BY: *[Signature]* DATE: 3/29/2018



Oldcastle Precast®
 P.O. BOX 606 AUBURN, WA 98071-0506
 PHONE: 800-462-1530 FAX: 253-735-4291

THIS DOCUMENT IS THE PROPERTY OF OLDCASTLE PRECAST, INC. IT IS CONFIDENTIAL, SUBMITTED FOR REFERENCE PURPOSES ONLY, AND SHALL NOT BE USED IN ANY WAY UNLESS TO THE INTERESTS OF, OR WITH THE WRITTEN PERMISSION OF OLDCASTLE PRECAST, INC. COPYRIGHT © 2018 OLDCASTLE PRECAST, INC. ALL RIGHTS RESERVED.

BOLT DOWN ANGLE - WSDOT
 PART DETAILS
 STANDARD PRODUCT

CUSTOMER: **WSDOT**

DATE	SALES	DRAWN	ENGINEER	CHECKED	SALES ORDER
03/09/2017		MKC			

DRAWING NUMBER: **010-2980100-001**

REVISION	DATE	SHEET
A	3/23/18	1 OF 1

REVISION	DESCRIPTION	BY
A	CHANGED DRAWING NUMBER / UPDATED BOM	CJC